

# THE ARCHITECTURAL REVIEW

WWW.ARPLUS.COM

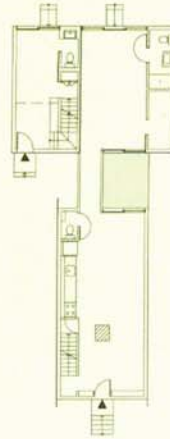
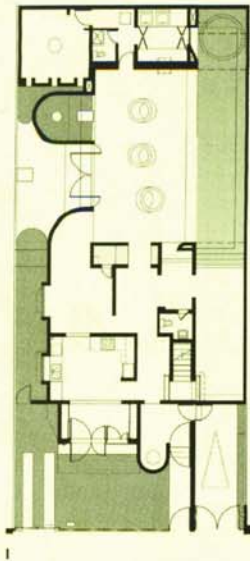
UK £7.25 €13 USA \$22.99 MAY 2007

1373 THE ARCHITECTURAL REVIEW MAY 2007 HOUSES HOLL UN STUDIO CAMPO BAEZA FOBERT HOUSES BY EMERGING ARCHITECTS

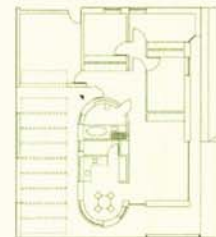
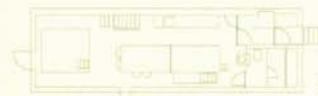
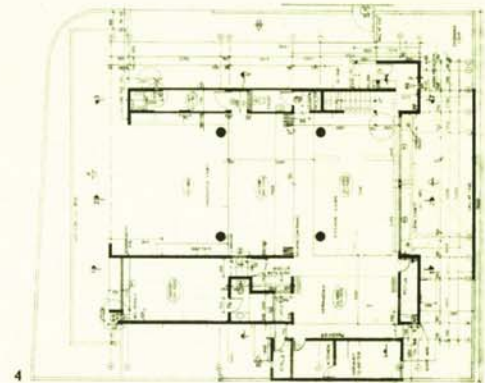
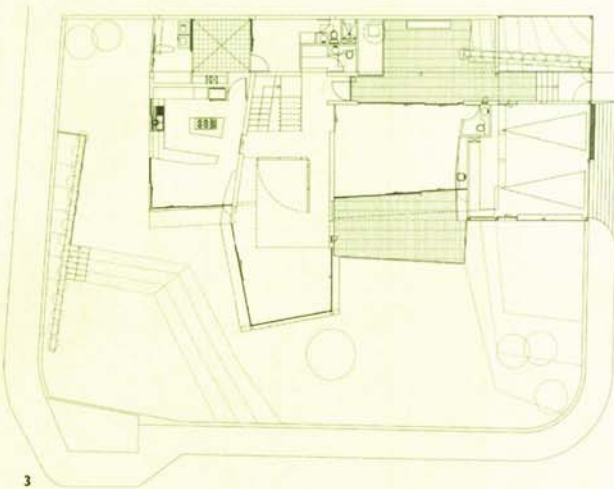


## HOUSES

Holl's ambassadorial residence UN Studio's Villa NM Houses by Emerging Architects



- 1 Puerto Rico, p80
- 2 USA, p76
- 3 Ecuador, p77
- 4 India, p82
- 5 Japan, p79
- 6 Poland, p84
- 7 Turkey, p83
- 8 Portugal, p86
- 9 Norway, p87
- 10 South Korea, p83
- 11 Chile, p81
- 12 Indonesia, p80
- 13 Denmark, p86
- 14 Switzerland, p76
- 15 Australia, p78
- 16 UK, p85
- 17 Luxembourg, p84



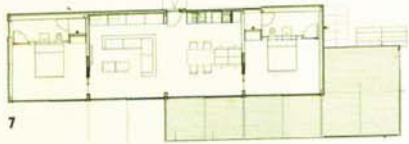
## Young house

For the last eight years the AR Awards for Emerging Architecture have consistently attracted hundreds of entries from architects and designers below the age of 45.\* In 2006, 462 entries were received from 53 countries. Within this varied array, that ranged in scale and complexity from furniture and products to significant large buildings such as an airport, the most well represented building type was the private house. Four of these were selected as part of the awards exhibition and featured in the awards issue (AR December 2006); 76 others remain unseen.

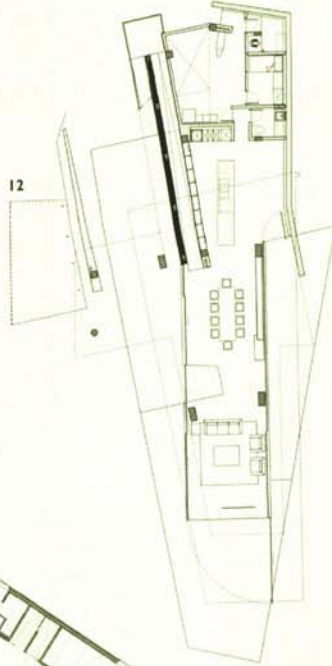
This selection of 17 is a cross section of these unseen entries, with each project located in a different country. Seen together it not only demonstrates the breadth of the AR Awards, which recognise emerging talent and ideas that look beyond image, trend or style. It also acts

in microcosm as a global survey that allows us to understand some of the preoccupations that relate to specific contexts, climates and communities. From as far afield as Poland, Portugal and Puerto Rico, each house is responsive and characterful in relation to the needs of client and obligations to site. Through this, despite concerns regarding the mediocrity of globalisation, in its own modest way, this selection demonstrates that diversity and specificity still exist and inspire. Perhaps, even, in the same way that canonical houses of the twentieth century go some way to summarise the century's architectural history (p36), these projects give us a glimpse of things to come. To enable comparison, each plan has been printed at the same scale (1:350). ROB GREGORY

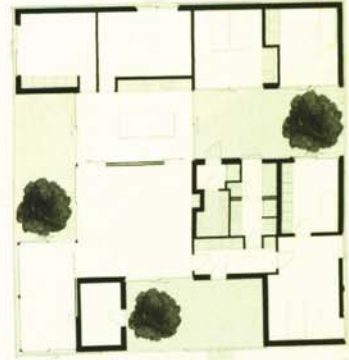
\*We will soon be accepting entries for the 2007 AR Awards for Emerging Architecture.



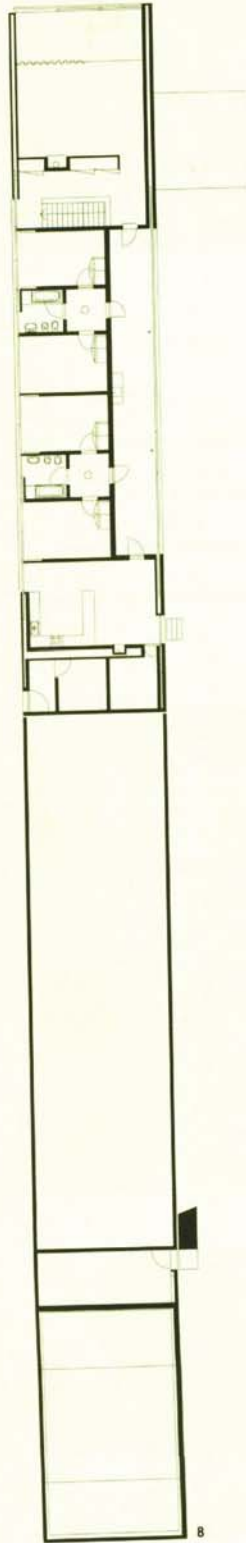
7



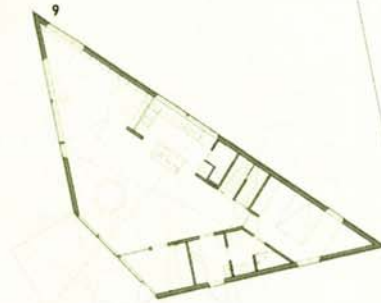
12



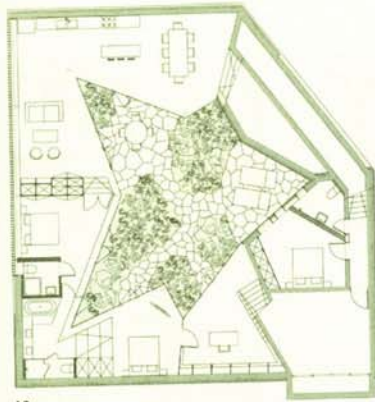
13



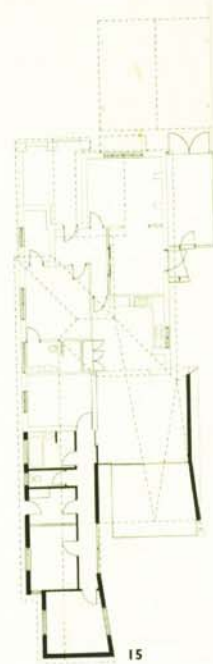
8



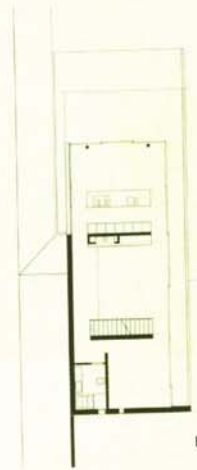
9



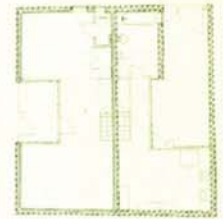
10



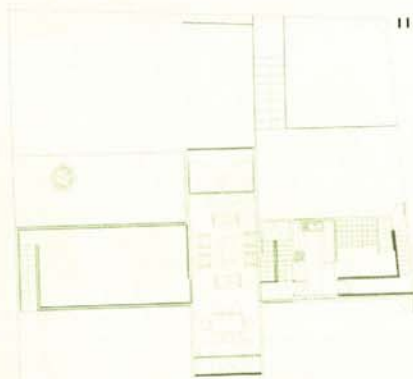
15



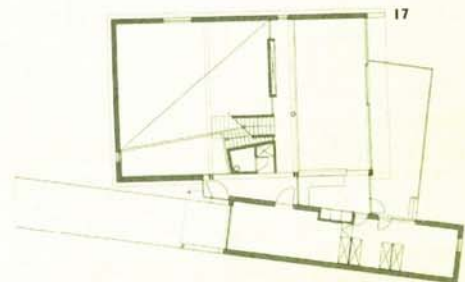
14



16



11



17

This is a family home in fast growing suburbs. The design is based on a paradox of 'closed houses on open plots'. Many houses open out into narrow margins adjacent to the road, which bylaws require. So, windows remain closed, while interiors are air-conditioned with artificial lights inside. This design looks inwards to migrants' traditional 'Pol' houses, yet draws inspiration from the post-independence 'open plot dwelling', exemplified by Le Corbusier's Shodan House in Ahmedabad. It has two blocks, of bedrooms and services, placed longitudinally to create a central void, enclosed by raised compound walls. While the house shuns the road, it draws in nature through windows on the rear concrete walls and sliding doors on the veranda.



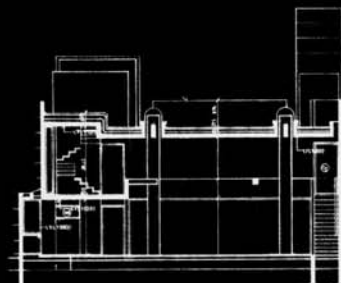
**RESIDENCE FOR ASHOK PATEL, AHMEDABAD, GUJARAT, WEST INDIA**  
ARCHITECT  
**MATHAROO ASSOCIATES**



Floor area 440sqm



- 1 The house presents a closed face to the neighbourhood.
- 2 Sliding screens and shutters control internal spaces.
- 3 Double-height volumes give generosity to interiors.
- 4 Detail of staircase.



cross section